

A

B

C

D

E

F

A

B

C

D

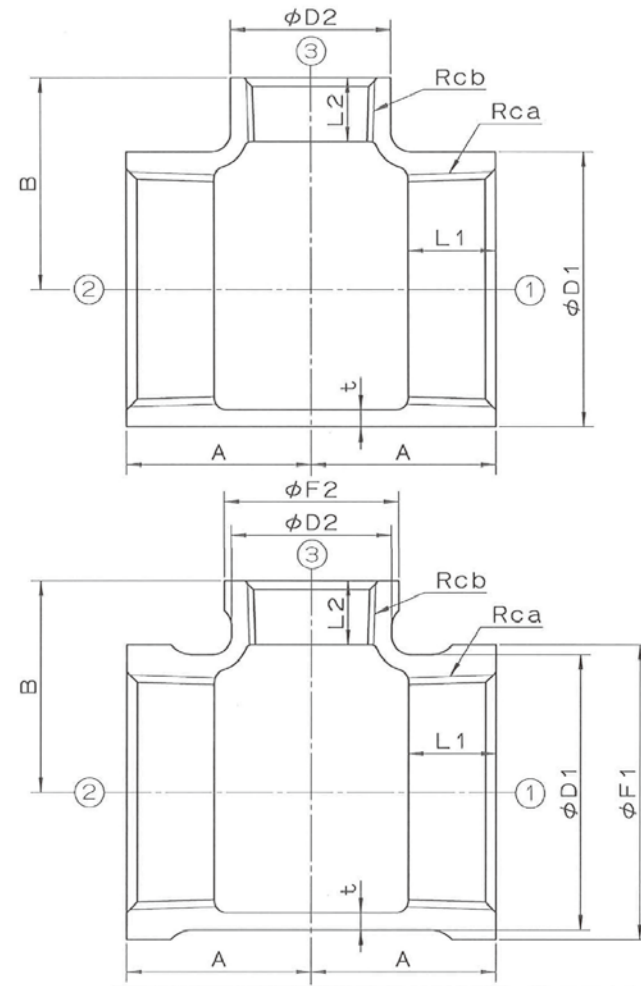
E

F

表1 各部寸法

| 呼び | | A | B | F1 | F2 | D1 | D2 | L1 | L2 | Rca | Rcb | t |
|-------------------|------------|----|----|----|----|----|----|----|----|---------|---------|-----|
| B ①×②×③ | A ①×②×③ | | | | | | | | | | | |
| 3/8×3/8×1/4 | 10×10×8 | 20 | 22 | 26 | 22 | 23 | 19 | 9 | 8 | Rc3/8 | Rc1/4 | 2.5 |
| 1/2×1/2×1/4 | 15×15×8 | 24 | 24 | 30 | 22 | 27 | 19 | 11 | 8 | Rc1/2 | Rc1/4 | 2.5 |
| 1/2×1/2×3/8 | 15×15×10 | 26 | 25 | 30 | 26 | 27 | 23 | 11 | 9 | Rc1/2 | Rc3/8 | 2.5 |
| 3/4×3/4×1/4 | 20×20×8 | 25 | 27 | 36 | 22 | 33 | 19 | 13 | 8 | Rc3/4 | Rc1/4 | 3 |
| 3/4×3/4×3/8 | 20×20×10 | 28 | 28 | 36 | 26 | 33 | 23 | 13 | 9 | Rc3/4 | Rc3/8 | 3 |
| 3/4×3/4×1/2 | 20×20×15 | 29 | 30 | 36 | 30 | 33 | 27 | 13 | 11 | Rc3/4 | Rc1/2 | 3 |
| 1×1×3/8 | 25×25×10 | 30 | 31 | 44 | 26 | 41 | 23 | 15 | 9 | Rc1 | Rc3/8 | 3 |
| 1×1×1/2 | 25×25×15 | 32 | 33 | 44 | 30 | 41 | 27 | 15 | 11 | Rc1 | Rc1/2 | 3 |
| 1×1×3/4 | 25×25×20 | 34 | 35 | 44 | 36 | 41 | 33 | 15 | 13 | Rc1 | Rc3/4 | 3 |
| 1 1/4×1 1/4×1/2 | 32×32×15 | 34 | 38 | 53 | 30 | 50 | 27 | 17 | 11 | Rc1 1/4 | Rc1/2 | 3.5 |
| 1 1/4×1 1/4×3/4 | 32×32×20 | 38 | 40 | 53 | 36 | 50 | 33 | 17 | 13 | Rc1 1/4 | Rc3/4 | 3.5 |
| 1 1/4×1 1/4×1 | 32×32×25 | 40 | 42 | 53 | 44 | 50 | 41 | 17 | 15 | Rc1 1/4 | Rc1 | 3.5 |
| 1 1/2×1 1/2×3/8*1 | 40×40×10 | 34 | 40 | 60 | 26 | 56 | 23 | 18 | 9 | Rc1 1/2 | Rc3/8 | 3.5 |
| 1 1/2×1 1/2×1/2 | 40×40×15 | 35 | 42 | 60 | 30 | 56 | 27 | 18 | 11 | Rc1 1/2 | Rc1/2 | 3.5 |
| 1 1/2×1 1/2×3/4 | 40×40×20 | 38 | 43 | 60 | 36 | 56 | 33 | 18 | 13 | Rc1 1/2 | Rc3/4 | 3.5 |
| 1 1/2×1 1/2×1 | 40×40×25 | 41 | 45 | 60 | 44 | 56 | 41 | 18 | 15 | Rc1 1/2 | Rc1 | 3.5 |
| 1 1/2×1 1/2×1 1/4 | 40×40×32 | 45 | 48 | 60 | 53 | 56 | 50 | 18 | 17 | Rc1 1/2 | Rc1 1/4 | 3.5 |
| 2×2×1/2 | 50×50×15 | 38 | 48 | 73 | 30 | 69 | 27 | 20 | 11 | Rc2 | Rc1/2 | 4 |
| 2×2×3/4 | 50×50×20 | 41 | 49 | 73 | 36 | 69 | 33 | 20 | 13 | Rc2 | Rc3/4 | 4 |
| 2×2×1 | 50×50×25 | 44 | 51 | 73 | 44 | 69 | 41 | 20 | 15 | Rc2 | Rc1 | 4 |
| 2×2×1 1/4 | 50×50×32 | 48 | 54 | 73 | 53 | 69 | 50 | 20 | 17 | Rc2 | Rc1 1/4 | 4 |
| 2×2×1 1/2 | 50×50×40 | 52 | 55 | 73 | 60 | 69 | 56 | 20 | 18 | Rc2 | Rc1 1/2 | 4 |

*1 縁付きは取り扱っておりません。



- 注2: Rcねじの詳細は、JIS B 0203による。
- 注1: 継手本体の詳細は、JIS B 2301による。

| 1 | 継手本体 | FCMB275-5 | | |
|----|-----------------------------|-----------|----|-----------------|
| 品番 | 品名 | 数量 | 材質 | 備考 |
| | 3/8~2 ^B | | | 日本継手株式会社 |
| 名称 | 径違いチー 縁付径違いチー (枝径の小さいもの) | | 略号 | RT,BRT |
| 図名 | ねじ込み式可鍛铸铁製管継手 (JIS継手) | | 図番 | H-0011 |
| | | | 改訂 | 1 2019.12.11 |